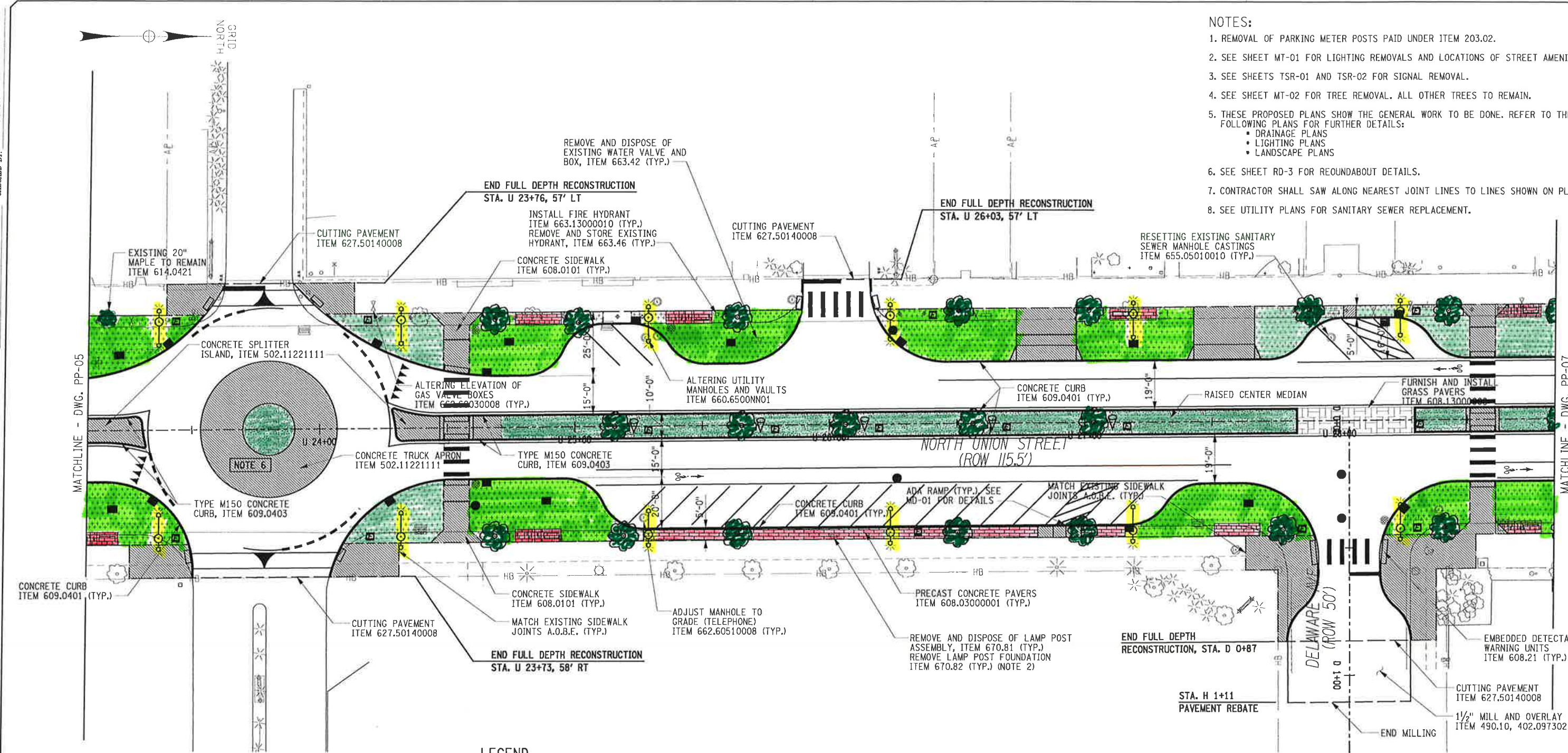
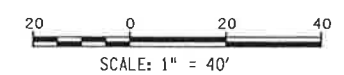


- NOTES:
1. REMOVAL OF PARKING METER POSTS PAID UNDER ITEM 203.02.
  2. SEE SHEET MT-01 FOR LIGHTING REMOVALS AND LOCATIONS OF STREET AMENITIES.
  3. SEE SHEETS TSR-01 AND TSR-02 FOR SIGNAL REMOVAL.
  4. SEE SHEET MT-02 FOR TREE REMOVAL. ALL OTHER TREES TO REMAIN.
  5. THESE PROPOSED PLANS SHOW THE GENERAL WORK TO BE DONE. REFER TO THE FOLLOWING PLANS FOR FURTHER DETAILS:
    - DRAINAGE PLANS
    - LIGHTING PLANS
    - LANDSCAPE PLANS
  6. SEE SHEET RD-3 FOR ROUNDABOUT DETAILS.
  7. CONTRACTOR SHALL SAW ALONG NEAREST JOINT LINES TO LINES SHOWN ON PLANS.
  8. SEE UTILITY PLANS FOR SANITARY SEWER REPLACEMENT.



**LEGEND**

	HOPE GRASS PAVERS
	PERMEABLE PRECAST CONCRETE PAVERS
	PLANTED AREA
	RAIN GARDEN
	CONCRETE
	LAWN
	ISLAND AND MEDIAN MEADOW



IT IS A VIOLATION OF LAW FOR ANY PERSON, UNLESS THEY ARE ACTING UNDER THE DIRECTION OF A LICENSED PROFESSIONAL ENGINEER, ARCHITECT, LANDSCAPE ARCHITECT, OR LAND SURVEYOR, TO ALTER AN ITEM IN ANY WAY. IF AN ITEM BEARING THE STAMP OF A LICENSED PROFESSIONAL IS ALTERED, THE ALTERING ENGINEER, ARCHITECT, LANDSCAPE ARCHITECT, OR LAND SURVEYOR SHALL STAMP THE DOCUMENT AND INCLUDE THE NOTATION "ALTERED BY" FOLLOWED BY THEIR SIGNATURE, THE DATE OF SUCH ALTERATION, AND A SPECIFIC DESCRIPTION OF THE ALTERATION.

REVISIONS			
DATE	DESCRIPTION	BY	SYM
7/27/15	Walkable Olean	JWL	

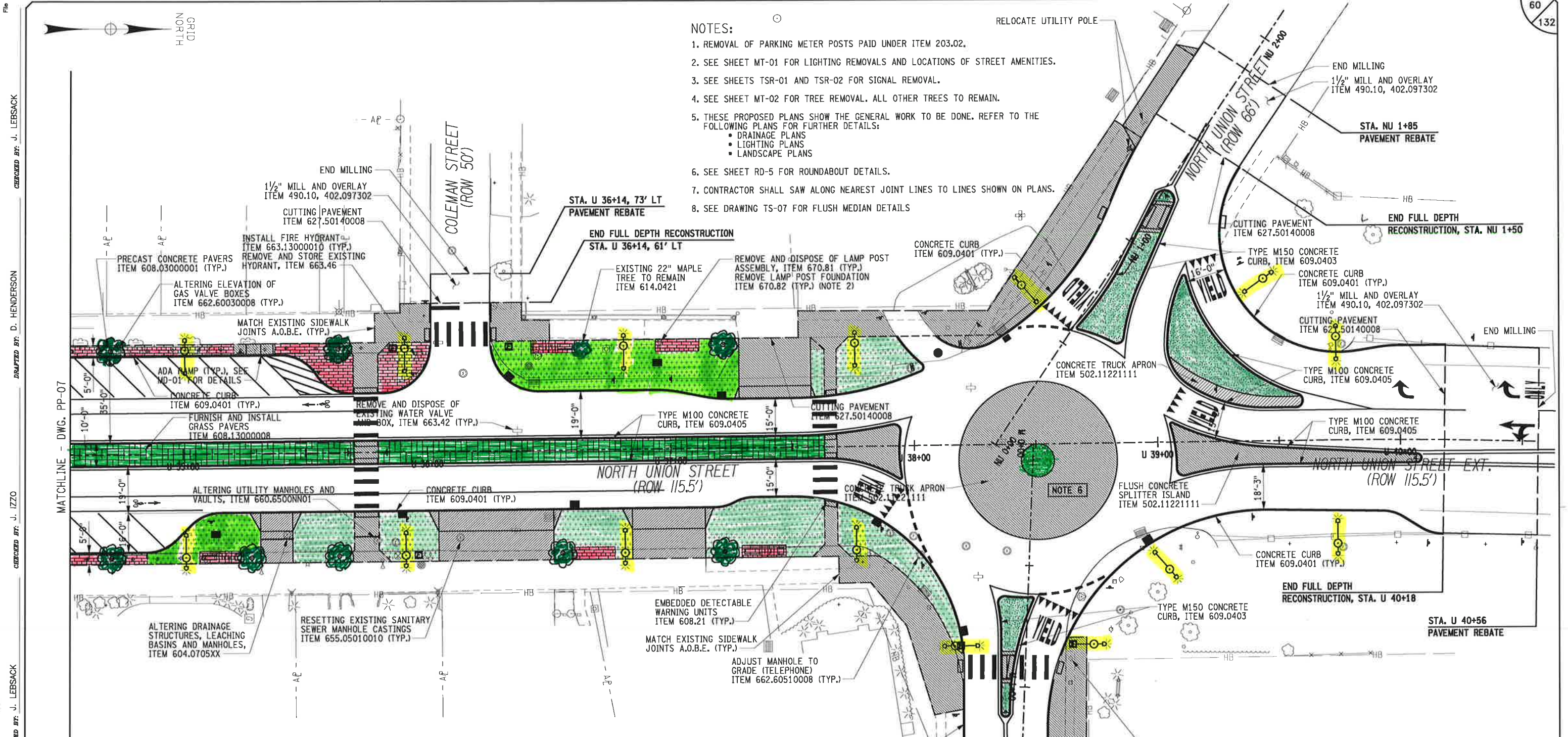
PIN 5760.83	TITLE OF PROJECT NORTH UNION STREET	CONTRACT NUMBER:
GIGP #1108	LOCATION OF PROJECT CITY OF OLEAN	DATE: 02/27/15
	TITLE OF DRAWING PROPOSED PLAN SHEET 6 OF 8	DRAWING NUMBER: PP-06

FILE: 0:\projects\13151\North Union Streetscape\Subarea\06\_Plan\580\_Plan.dwg  
 DATE/TIME: 7/24/2015 11:58:58 AM  
 DESIGNED BY: J. LEBSACK  
 CHECKED BY: J. LEBSACK  
 DRAFTED BY: D. HENDERSON  
 CHECKED BY: J. LEBSACK



**NOTES:**

1. REMOVAL OF PARKING METER POSTS PAID UNDER ITEM 203.02.
2. SEE SHEET MT-01 FOR LIGHTING REMOVALS AND LOCATIONS OF STREET AMENITIES.
3. SEE SHEETS TSR-01 AND TSR-02 FOR SIGNAL REMOVAL.
4. SEE SHEET MT-02 FOR TREE REMOVAL. ALL OTHER TREES TO REMAIN.
5. THESE PROPOSED PLANS SHOW THE GENERAL WORK TO BE DONE. REFER TO THE FOLLOWING PLANS FOR FURTHER DETAILS:
  - DRAINAGE PLANS
  - LIGHTING PLANS
  - LANDSCAPE PLANS
6. SEE SHEET RD-5 FOR ROUNDABOUT DETAILS.
7. CONTRACTOR SHALL SAW ALONG NEAREST JOINT LINES TO LINES SHOWN ON PLANS.
8. SEE DRAWING TS-07 FOR FLUSH MEDIAN DETAILS



FILE NAME: C:\p\city of olean\3157-north Union Streetscape\DWG\_PP-07.dwg  
 DATE/TIME: 7/22/2015 10:58:15 AM  
 DESIGNER: R. KLINCZAR  
 CHECKED BY: J. LEBSACK  
 DESIGNED BY: J. LEBSACK  
 CHECKED BY: J. IZZO  
 DESIGNED BY: D. HENDERSON  
 CHECKED BY: J. LEBSACK

**LEGEND**

- HDPE GRASS PAVERS
- PERMEABLE PRECAST CONCRETE PAVERS
- PLANTED AREA
- RAIN GARDEN
- CONCRETE
- LAWN
- ISLAND AND MEDIAN MEADOW

IT IS A VIOLATION OF LAW FOR ANY PERSON, UNLESS THEY ARE ACTING UNDER THE DIRECTION OF A LICENSED PROFESSIONAL ENGINEER, ARCHITECT, LANDSCAPE ARCHITECT, OR LAND SURVEYOR, TO ALTER AN ITEM IN ANY WAY. IF AN ITEM BEARING THE STAMP OF A LICENSED PROFESSIONAL IS ALTERED, THE ALTERING ENGINEER, ARCHITECT, LANDSCAPE ARCHITECT, OR LAND SURVEYOR SHALL STAMP THE DOCUMENT AND INCLUDE THE NOTATION "ALTERED BY" FOLLOWED BY THEIR SIGNATURE, THE DATE OF SUCH ALTERATION, AND A SPECIFIC DESCRIPTION OF THE ALTERATION.

REVISIONS			
DATE	DESCRIPTION	BY	SYM.
7/27/15	Walkable Olean	JWL	

PIN 5760.83	TITLE OF PROJECT NORTH UNION STREET	CONTRACT NUMBER:
GIGP #1108	LOCATION OF PROJECT CITY OF OLEAN	DATE: 02/27/15
Hatch Mott MacDonald	TITLE OF DRAWING PROPOSED PLAN SHEET 8 OF 8	DRAWING NUMBER: PP-08

